

# WorldTelemetry

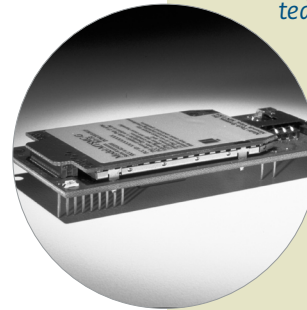
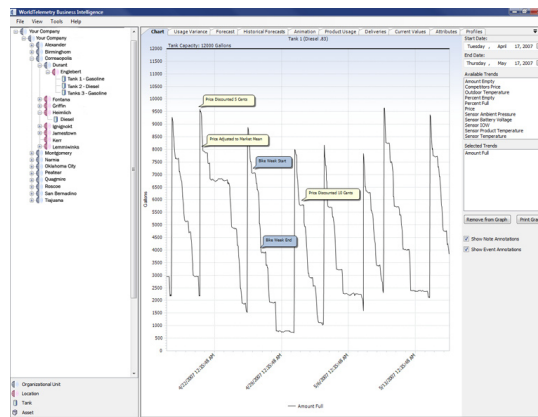
## Wireless Asset Monitoring and Management Control

WorldTelemetry, Inc. is an end-to-end solution providing asset monitoring and management control systems for companies within the oil, gas, petrochemical and related industries. WorldTelemetry provides timely and accurate data from remote and hazardous locations through a single interface, converting it into business intelligence. Data is collected wirelessly via a Multi-Tech SocketModem® modem module.

“Our solutions empower our clients to quantifiably and consistently reduce distribution expenses and mitigate environmental risks, while substantially improving their supply chain management,” explains Amanda Ziegler, Communications Marketing Manager for WorldTelemetry. “Companies utilizing our solutions gain a competitive edge over companies with less information and control over their assets.”

The Multi-Tech SocketModem GPRS is embedded in WorldTelemetry’s DataGate, which allows data to be transmitted from sensors on liquid storage tanks to the WorldTelemetry data center. It is here where tank information is aggregated and displayed to their customers through a Web Interface. Customers can then use this information to improve their tank management processes and decisions. The aggregated data transmitted by the DataGate is also analyzed by WorldTelemetry’s Business Intelligence software, providing users with an even greater ability to better manage forecasting, dispatch and inventory.

“Our engineers chose Multi-Tech because we needed a reliable communications method from which to build our wireless monitoring network,” said Ziegler. “Not only has the SocketModem GPRS provided us with rock-solid performance, it has also been easy to program and has been seamlessly compatible with the other boards that we use in our solution.”



## SocketModem GPRS

- GPRS Class 10
- Packet data up to 85.6K bps
- Universal Socket Connectivity
- Carrier approved

**WorldTelemetry**, a Tulsa-based asset management company, is committed to Fueling Better Decisions

in wet-stock management.

WorldTelemetry’s asset management solution combines a powerful Business Intelligence software application, user-friendly

Web Interface and a unique, intrinsically safe wireless monitoring network.

Together, these technologies



allow for unprecedented access to the information necessary for the best management decisions.

**For more information contact:**

**WorldTelemetry**

Telephone: 1-800-283-8730

Web: [www.worldtelemetry.com](http://www.worldtelemetry.com)